

# Industrial Refrigeration Courses

## Installation, commissioning, operation and maintenance of compressor units and plants PTK-REF-36

### Details

<b>Course Type:</b>	Instructor Led Course
<b>Audience:</b>	Service engineers or service technicians with basic knowledge and experience within industrial refrigeration.
<b>Duration:</b>	3 days
<b>Location:</b>	Holme, Denmark
<b>Language:</b>	EN
<b>Registration:</b>	No later than 4 weeks in advance.
<b>Training dates:</b>	See dates on our web site.
<b>Price:</b>	€ 1200

### Objective of the course

Learn the trainees:

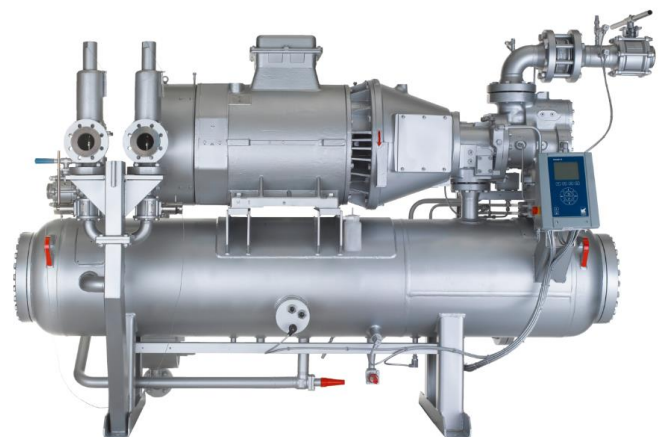
- How to perform a safe and efficient start-up and commissioning of compressor units.
- Trouble shooting on the specific compressor equipment.

Provide the trainees with:

- Relevant background information and the newest knowledge.
- Materials and tools to conduct (local) on-the-job training.
- Bring your own safety shoes, as the course is inside the factory area

### Program

- Introduction to the compressor line
- Check of installation and connections
- Check of unit components
- Calibration of sensors
- Evacuation and refrigerant charge
- Settings and operation of control system and VSD
- Use of manuals and parts lists
- Safety aspects for service
- Troubleshooting
- Hands-on exercises on control simulators
- Multisab sequence control



**Valid from 1 January 2023**

**All the prices are subject to alteration without further notice.**

# Industrial Refrigeration Courses

## 3 days training plan

TOPICS	TOPICS	TOPICS
Welcome/intro to Johnson Controls	Commissioning	Compressor types and differences
Your expectations to the course		
Basic compressors (screw & reciprocating)	Controls	Controls of compressors
Basic compressors (screw & reciprocating)	Controls	Safety with refrigerants
Valves and controls components	Factory tour	Preventive maintenance
	Reciprocating compressors	Evaluation of the course

Daily training is from 8.30am to 4pm.

Lunch from 11.45am to 12.30pm + coffee/tea and break snacks are included in the price of the course.

## Training coordinator

Kenneth Boetius  
Senior Lead Training Specialist  
Johnson Controls, Holme (Denmark)

**Valid from 1 January 2023**

**All the prices are subject to alteration without further notice.**

# Industrial Refrigeration Courses

## Course registration

Participants subscribe for courses by email to [sabrolearning@jci.com](mailto:sabrolearning@jci.com)

NOTE! Please bring your own safety shoes. Safety glasses and working coats will be available on site.

## Payment details

Customer Learning Center entity number (Hyperion Code) is: 213. P/O Address is:  
Johnson Controls Scandinavia  
PO Box 298  
814 99 Bratislava 1  
Slovakia

## Registration notes

The Customer Learning Center reserves the right to call out the course if there are no sufficient participants backing it up. Before booking any trips or accommodations, please make sure the course is confirmed. To do so, please contact us at [sabrolearning@jci.com](mailto:sabrolearning@jci.com)

## Cancellation policy

You are allowed to cancel your registration 4 weeks before the beginning of the training. If you do cancel after this period your entity will still be charged 50% of the training cost.

No shows (without proper cancellation through the Learning Network) will still be entitled to pay 100% of the training cost; exceptions could apply due to force majeure causes.

Please be also aware that to avoid cancellation penalties, your entity always has the option of placing somebody else in your place. Proper notification to the Customer Learning Center is required for this purpose.

# Industrial Refrigeration Courses

## Travel and stay

Please make sure to book your hotel, travel and transport!

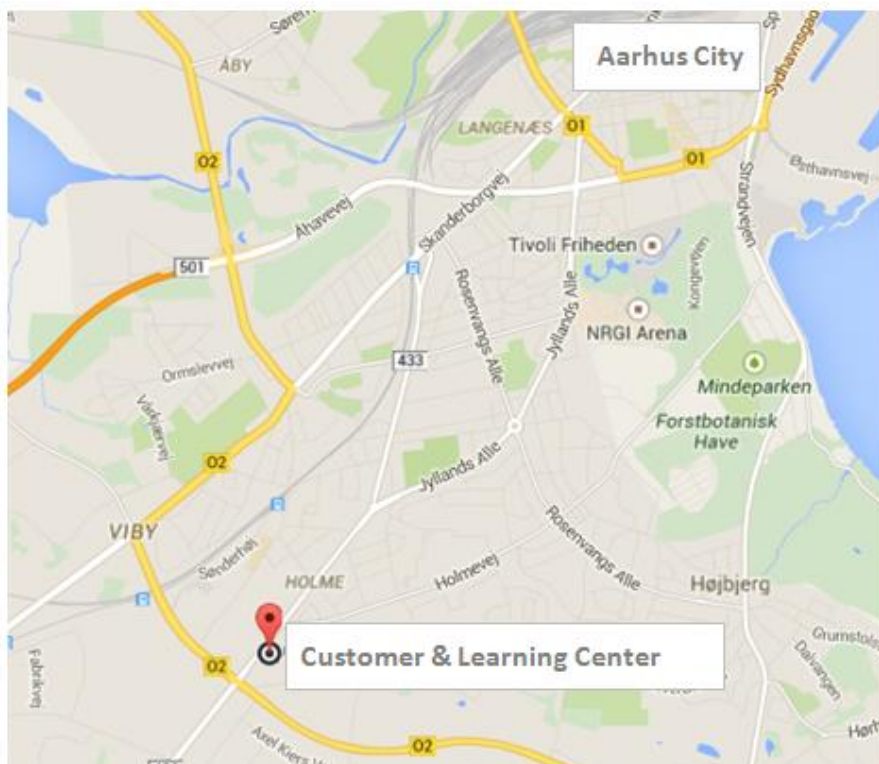
We foresee coffee breaks, lunches, training materials and certificates.

Travel and stay are not included in the course cost.

- Nearest airports are:
  - Billund - [www.bll.dk](http://www.bll.dk) Connection to most European airports
  - Aarhus - [www.aar.dk](http://www.aar.dk)
  - Aalborg - [www.aal.dk](http://www.aal.dk)
  - Transport from the airports to Billund and Aarhus are by bus, taxi or rental car.
- Currency in Denmark is DKK/Danish Crowns.  
Please note that Euros are normally not accepted.
- Common credit cards like MasterCard, Visa etc. are accepted in most places, but not in public busses.

## Course Location

Customer & Learning  
Center  
Christian X's Vej 201  
8270 Højebjerg, Holme  
Denmark



**Valid from 1 January 2023**

**All the prices are subject to alteration without further notice.**

# Industrial Refrigeration Courses

Summary Logistics for JCI Customer & Learning Center, DK - For your visit

Venue address	Christian X's Vej 201 8270 Hoejbjerg, Holme Denmark
On-site contact person	Kenneth Boetius <a href="mailto:Kenneth.Romeo.Boetius@jci.com">Kenneth.Romeo.Boetius@jci.com</a> Phone: 0045 2550 7360
Distances to venue	From Aarhus airport: 80 km (45 min drive) From Billund airport: 90 km (1hr drive) From Aalborg airport: 130 km (1hr30 min drive) From Aarhus city center: 7 km (15 min drive) From Aarhus station: 7 km (15 min drive)
Hotel	Radisson BLU Scandinavia Hotel <a href="http://www.radissonhotels.com/denmark/aarhus">www.radissonhotels.com/denmark/aarhus</a> Margretheplassen 1, 8000 Aarhus C Phone: 0045 86 12 86 65
Hotel	Hotel Scandic Aarhus City <a href="http://www.scandicaarhuscity.guestreservations.com">www.scandicaarhuscity.guestreservations.com</a> Østergade 10, 8000 Aarhus C Phone: 0045 89 31 81 00
Hotel	Comwell Aarhus <a href="http://www.comwell.com/hoteller/comwell-hotel-aarhus">www.comwell.com/hoteller/comwell-hotel-aarhus</a> Værkmestergade 2, 8000 Aarhus C Phone: 0045 86 72 80 00
Hotel	Helnan Marselis Hotel <a href="http://www.helnan.dk/marselis">www.helnan.dk/marselis</a> Strandvejen 25, 8000 Aarhus C Phone: 0045 86 14 44 11
Hotel	Scandic Aarhus Vest <a href="http://www.scandichotels.dk/hoteller/danmark/aarhus/scandic-aarhus-vest">www.scandichotels.dk/hoteller/danmark/aarhus/scandic-aarhus-vest</a> Rytoften 3, 8210 Aarhus V
Hotel	Cabinn Hotel <a href="http://www.cabinn.com">www.cabinn.com</a> Kannikegade 14, 8000 Aarhus C Phone: 0045 86 75 70 00
Hotel	Zleep Hotel Aarhus South ( nearest hotel ) <a href="http://www.zleep.com/da/hotel/aarhus-viby">www.zleep.com/da/hotel/aarhus-viby</a> Viby Ringvej 4, 8260 Viby J Phone: 0045 70 23 56 35

Valid from 1 January 2023

All the prices are subject to alteration without further notice.